

TRITOP^{CMM}



Optical 3D Coordinate Measuring Machine

1 x 0.5 x 0.5 m³ Measuring Volume – 0.015 mm Accuracy
10 x 5 x 5 m³ Measuring Volume – 0.2 mm Accuracy

gom

TRITOP^{CMM}

Optical 3D Coordinate Measuring Machine

Industrial Measurement Technology Quality Control and 3D Inspection

The portable TRITOP^{CMM} system measures coordinates of three-dimensional objects quickly and precisely. Measuring tasks that traditionally were performed by tactile 3D coordinate measuring machines can now easily be carried out with the TRITOP^{CMM} system. It does not require any complex, heavy and maintenance-intensive hardware. The measuring machine comes to the object!

As with tactile coordinate measuring machines TRITOP^{CMM} records the coordinates and their orientation in space for any feature of interest:

- Surface points and sections
- Primitives
- Holes, punch holes and edges
- Diameters, lengths, angles ...

After the 3D coordinates have been determined, the measurement mathematically is transformed into the coordinate system of the component:

- RPS
- Gage alignment
- Best-fit ...

The measured and aligned data is used for various tasks:

- CAD comparison
- Verification of shape and position tolerances
- Verification of specifications from drawings, files or tables
- Initial measurements

When comparing the measuring data with CAD data (IGES, VDA, STEP, Catia, ProE, UG ...), the corresponding measuring reports are created in the familiar formats:

- False-color representation
- Deviation of individual points as labels
- Sections, angles and distances
- Diameters and flatness
- Tables and lists

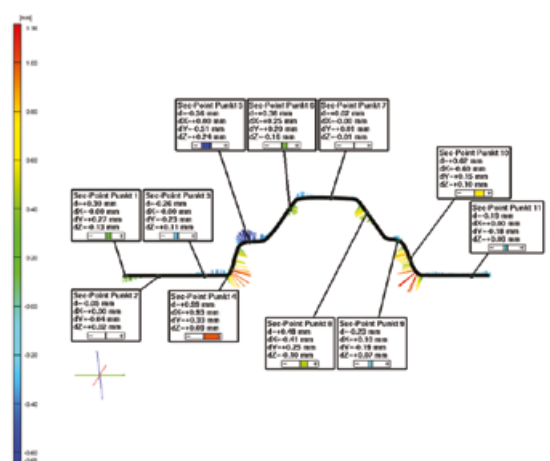
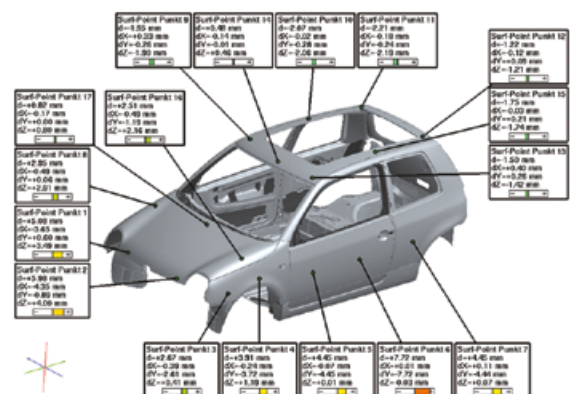
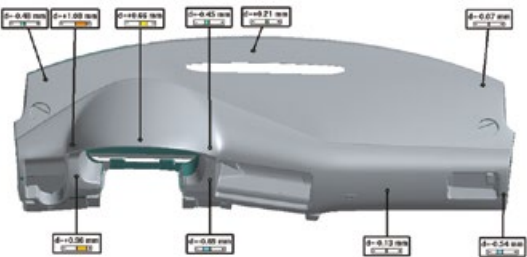
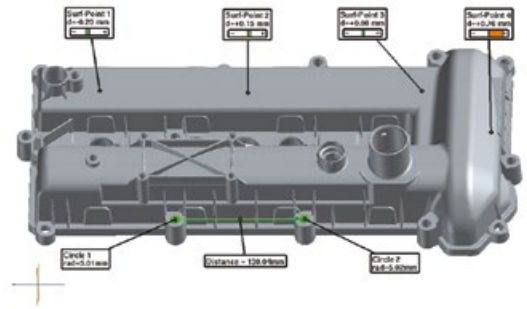


Image Processing with Subpixel Accuracy The Mouse Pointer Becomes a Touch Probe

The measuring object is recorded with a high-resolution digital camera. The images are automatically evaluated on a notebook using the TRITOP^{CM} software. With a mathematical adjustment computation, a precise model is automatically calculated from ray intersections, camera positions, lens distortions and object coordinates. The adhesive reference point markers applied to the object and the coded markers and scale bars placed next to the object are included in this computation.

Based on this model and on the digital images, the user performs the actual measurement directly on the notebook screen. He clicks with the mouse pointer on the features to be measured and thus starts a new type of image processing and triangulation algorithms. The software then fits these selected features three-dimensionally in space and automatically decides which images are suitable for the exact coordinate determination.

It only takes seconds to determine features like surface control points, sections, holes etc. without occupying the object any longer.

A 3D object window shows all measured features and coordinates. In this window, CAD data is imported, best-fit elements like cylinders, cones etc. are created and simple CAD functions like intersections and projections are used. Any combination of elements is possible. The user has direct access to dimensions like distances, angles or diameters.

Deviations to the CAD data are displayed in false-color. Automatic or interactive labels or sections display the numerical values of the deviations. Finally, the measuring reports are exported or directly printed.



Measuring with Photos

As for all 3D measurements, the object for a TRITOP^{CMM} measurement has to be in a stable and fixed position as well.

Prior to taking photos, the object needs to be prepared:

- Some coded measuring markers are applied to the fixture or directly to the object. These markers are used for the fully automatic evaluation process.
- Scale bars are positioned next to the object. Their dimensions are transferred to the measurement. Two scale bars are used to observe the measuring accuracy.
- Surface points to be measured have to be marked. For this purpose, adhesive points can be used, the thickness of which is precisely known. Another method is to mark points or sections with a pen. Each point or line drawn like this is precisely determined by image processing algorithms.

In order to carry out TRITOP^{CMM} measurements, the object needs to be recorded from various directions with the digital camera. It is not necessary to maintain exact camera positions. A rough scheme of recording positions for certain objects is shown in the user manual.

The camera images are transferred to the notebook fully automatically using a high-speed wireless network or a flash card reader. On the notebook, the complete further evaluation is carried out.

Idea of the TRITOP^{CMM} Technique

- The system precisely determines the coordinates of each adhesive reference point and each freehand marking. Thus, these coordinates describe a point on the object's surface. As with tactile machines, here as well several individual points are combined to primitives, or the deviation to the nominal surface is directly determined.

Advantages of the TRITOP^{CMM} Technique

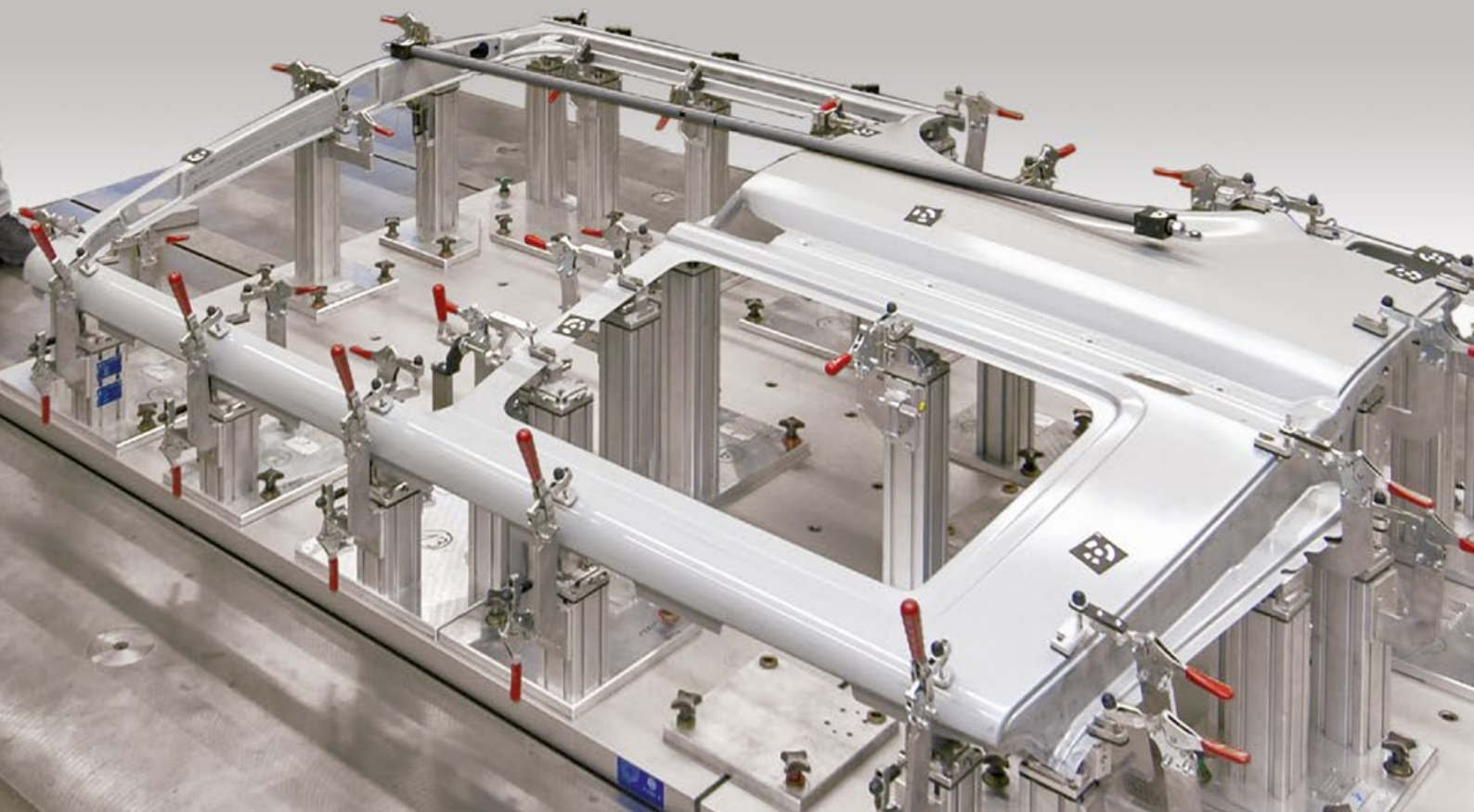
- Complete 3D measuring machine with minimum hardware requirements (2 cases with a total weight of 23 kg)
- The object is not touched during measuring
- Very high accuracy also for large objects
- No wear and tear, no decrease of accuracy
- Easy handling
- Independent of environmental conditions (climatic chamber, open air ...)





Fields of Application

- Inspection of sheet metal parts and car bodies, e. g. in pilot production, process optimizing, tool try-outs, start of series production or during random samples
- Quality control of large objects, e. g. aircraft, ships, wind turbines, etc.
- Verification of plastic parts, e. g. for first article inspection
- Verification and recording of jigs and fixtures
- Measuring of models and prototypes, e. g. vehicle interior and exterior design
- Verification of tubes and wires with respect to their three-dimensional shape
- Measuring trimming edges of two-dimensional sheet metal blanks
- Deformation analysis of car and climatic chamber tests
- Measuring of reference point fields



The Complete TRITOP^{CMM} System

Measuring Camera

- Digital camera with high-resolution CCD chip
- Stable and certified lens
- Data transmission via flash card or network
- Flash
- Robust plastic case for camera and notebook



High-speed Wireless Network

- Fast, wireless 54Mbit/s image transfer
- 64 bit encryption
- Automatic analysis of the measurement images

Notebook

- High-performance notebook with OpenGL graphics
- Network card and flash card reader
- DVD/CD recorder/reader
- Windows and LINUX installation



Scale Bars

- Low thermal expansion
- 4 x 1 m and 2 x 0.5 m, screwable (gage block principle)
- Various inserts for different object sizes
- Certified length according to German and American standards
- Coded for automatic identification
- Robust plastic case



Marker Material

- Coded points on adhesive or magnetic foil
- Adhesive points of various sizes
- Marker pens
- Adapter for threads, setscrews and collar holes



Software

- Loading of digital color and gray scale images
- Robust orientation of image sets
- Precise online calibration of cameras and lenses
- Bundle adjustment with an unlimited number of unknowns
- Feature and surface oriented image processing
- Macro functionality for process automation
- Mathematical alignment of components
- Nominal/actual comparison with CAD interface
- Primitive module
- Measuring reports in various formats





System Description

- Non-contact photogrammetry system
- Self-calibrating due to overdetermined systems of equations
- Self-checking due to the use of two scale bars
- Maintenance-free
- Typical measuring time per object: 5 to 60 minutes (depending on the object size)
- Typical number of measuring points per object: 10 to 50,000
- CAD interface (IGES, VDA, STEP, Catia, ProE, UG ...)
- Average length measurement deviation according to VDI/VDE 2634 [μm]: $5 + L/50$ (L in mm)
- Temperature range without camera protection: 0° to 50° C
- Temperature range with camera protection: -40° to 100° C
- Humidity: non-condensing
- Case size: $1350 \times 260 \times 120 \text{ mm}^3$ and $470 \times 390 \times 190 \text{ mm}^3$
- Total weight: 23 kg

GOM

GOM was founded in 1990 as spin-off of the Technical University Braunschweig, Germany. The company owns subsidiaries in Switzerland, France, Great Britain, Italy and Belgium. Worldwide, more than 40 committed and competent partners market GOM products.

GOM focuses on the development of optical 3D measurement technology for industrial use. Efficient measuring instruments are available for numerous applications. The equipment is mainly used in product development and quality assurance.

Today, GOM employs more than 250 people and can rely on the support of their international distributors.

Australia
MOSS Pty Ltd
Phone +61 3 9946 1086
info@scan-xpress.com.au

Austria
Westcam Datentechnik GmbH
Phone +43 5223 5550 90
office@westcam.at

Brazil, Argentina
ROBTEC DO BRASIL
Phone +55 11 3318 5100
info@robtec.com

China
Dom 3d Ltd.
Phone +862 1 2898 6108
info@dom-3d.com.cn

China
Pro-Technic Machinery Ltd.
Phone +852 2428 2727
atd@protechnic.com.hk

China, Taiwan
Road Ahead Technologies
Phone +886 2 2999 6788
marcel@rat.com.tw

Columbia
USM Columbia S.A.
Phone +57 4279 9000
gerencia@usm.com.co

Croatia, Slovenia
Topomatika d.o.o.
Phone +385 91 5046 239
info@topomatika.hr

Czech Republic
MCAE Systems s.r.o.
Phone +420 549 128 811
mcae@mcae.cz

Denmark
Zebicon
Phone +45 7650 9152
info@zebicon.com

Ecuador
Quion
Phone +593 74089105
info@quion.ec

Greece
EXPERTCAM
Phone +30 210 2757 410
expertcam@otenet.gr

Hungary
R-Design Studio Ltd.
Phone +36 1 365 10 89
info@r-design.hu

India
APM Technologies
Phone +91 11 4163 1416
apmtech@vsnl.net

Indonesia
PT Henindo
Phone +62 21 489 9675
henvgs@attglobal.net

Iran
Fadak Sanat Gostar (FSG)
Phone +98 21 88 730 735
info@fadaksanat.com

Israel
Globus Technical Equipments Ltd.
Phone +972 9 9560444
nir@globus.co.il

Japan
Marubeni Solutions Corp.
Phone +81 3 5778 8571
Sato-Yoshiyuki@marubeni-sys.com

Malaysia, Singapore
First High Tech Sdn Bhd
Phone +603 7665 2188
info@1st.com.my

Mexico
CIM Co.
Phone +52 55 5565 6633
info@cimco.com.mx

Pakistan
Ultimate CAD Solutions Ltd
Phone +92 51 5467572
shakir@ucs-int.com

Peru
Advanced 3D Technologies
Phone +511 637 5000
diseno@advanc3d-tec.com

Poland
Lenso Sp. z o.o.
Phone +48 61 894 78 93
info@lenso.com.pl

Portugal
S3D
Phone +35 12 4457 3100
suporte@s3d.pt

Romania
SPECTROMAS SRL
Phone +40 21 3105190
info@spectromas.ro

Russia, Kazakhstan
NIAT
Phone +7 495 3111198
info@niat-ntk.ru

South Africa
RGC Engineering Pty
Phone +27 11 531 0766
info@rgcengineering.co.za

South Korea
OMA Co.
Phone +82 42 822 9501
support@omagom.co.kr

Spain
Metronic S.A.
Phone +34 943 121400
comercial@metronicnet.com

Sweden, Finland
Cascade Control AB
Phone +46 31 84 0870
info@cascade.se

Thailand
Mentel Co., Ltd.
Phone +662 719 6969
info@mentel.co.th

Turkey
Cadem A.S.
Phone +90 216 557 64 64
gom@cadem.com.tr

USA, Canada
Capture 3D Inc.
Phone +1 714 546 7072
info@capture3d.com

USA, Canada
Trillion Quality Systems LLC
Phone +1 215 710 3000
info@trillion.com

Venezuela
AT Group Software Inc
Phone +58 212 9432 446
dkinz@atgroup.com.ve

Vietnam
AIE
Phone +84 43 7345 435
aie@vnn.vn



GOM mbH
Mittelweg 7-8
38106 Braunschweig
Germany
Phone +49 531 390 29 0
Fax +49 531 390 29 15
info@gom.com

GOM France SAS
10 Quai de la Borde
91130 Ris Orangis
France
Phone +33 1 60 47 90 50
Fax +33 1 69 06 63 60
info-france@gom.com

GOM International AG
Bremgarterstrasse 89B
8967 Widen
Switzerland
Phone +41 5 66 31 04 04
Fax +41 5 66 31 04 07
international@gom.com

GOM Branch Benelux
Interleuvenlaan 15 F
3001 Leuven
Belgium
Phone +32 16 408 034
Fax +32 16 408 734
info-benelux@gom.com

GOM UK Ltd
Unit 14, The Cobalt Centre
Coventry, CV3 4PE
United Kingdom
Phone +44 2476 639920
Fax +44 2476 516990
info-uk@gom.com

GOM Italia Srl
Via della Resistenza 121/A
20090 Buccinasco (MI)
Italy
Phone +39 02 457 01 564
Fax +39 02 457 12 801
info-italia@gom.com

GOM Asia
Keyuan Road 88, Tower 2, Unit 731
201203 Shanghai
PR China
Phone +86 21 2898 6551
Fax +86 21 2898 6552
info-asia@gom.com

www.gom.com

gom